

# Data Nova Retail installation process

---

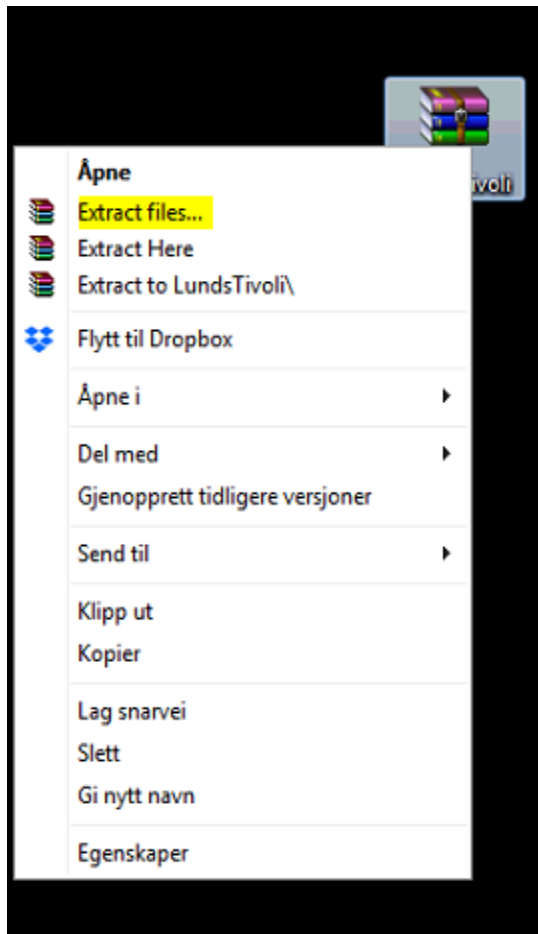
## Step 1:

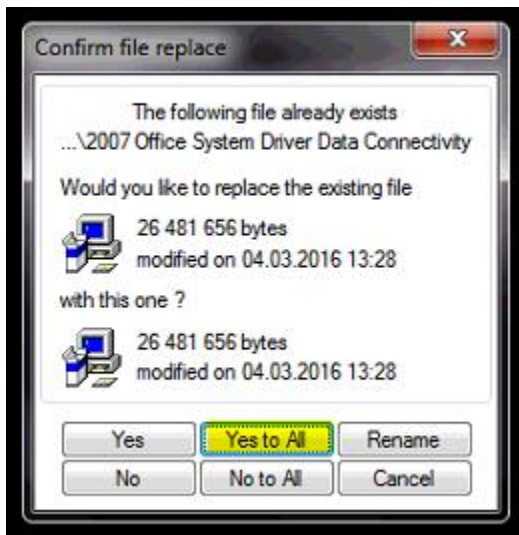
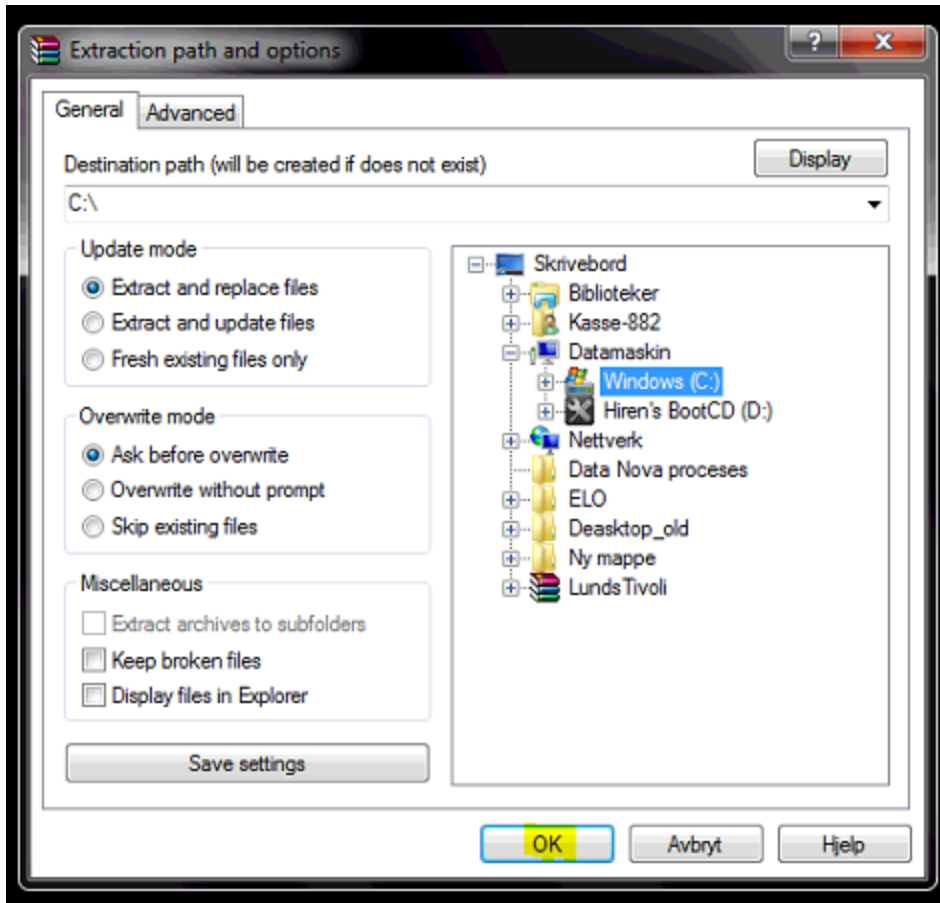
- Go to browser, enter bellow URL to download Installation folder:

<http://test.datanova.no/Lunds/LundsTivoli.zip>

## Step 2:

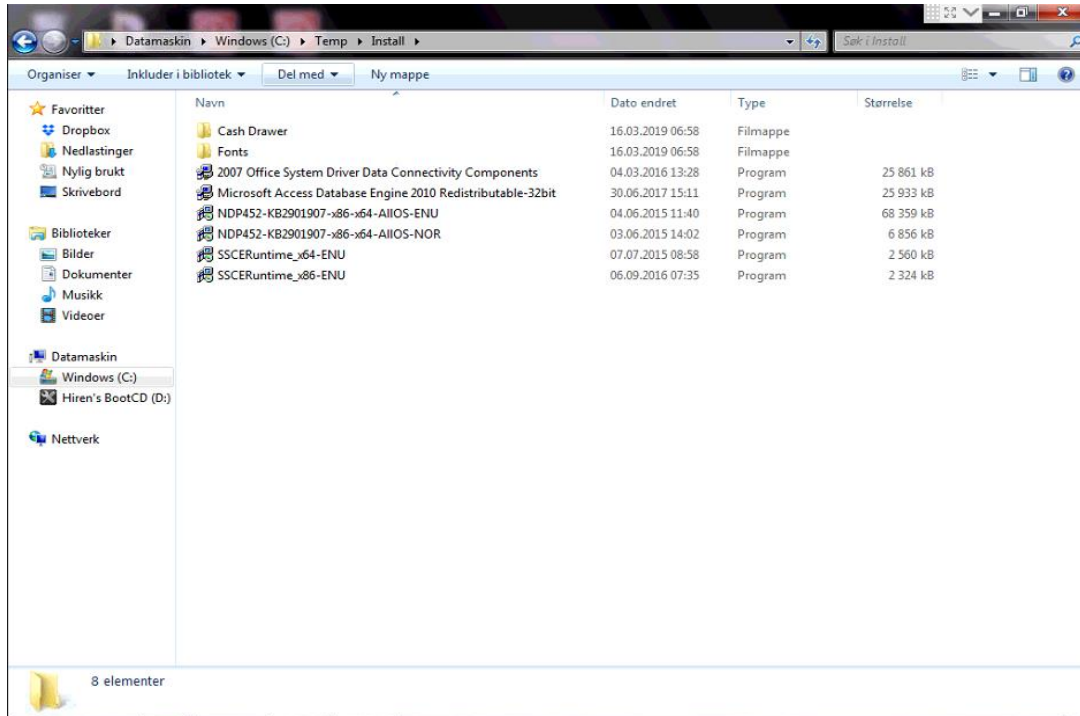
- Right-click on download file, go to **Extract files...**, then Click on **Window(C:)**, then click **OK**, and then click **Yes to All**:



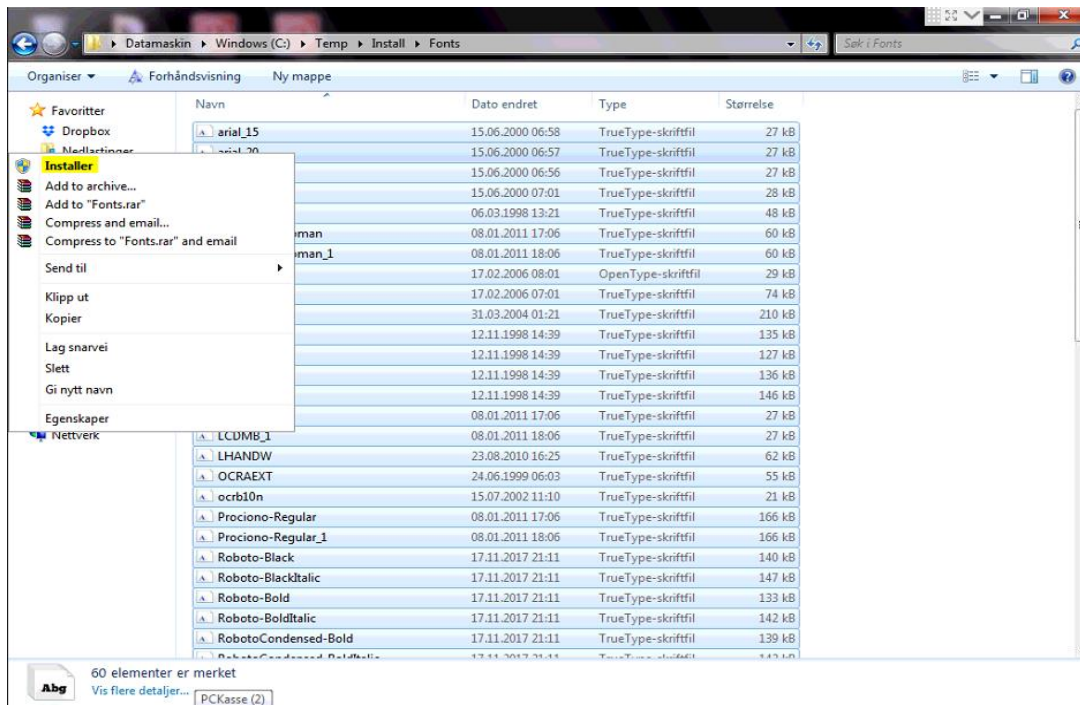


**Step 3:**

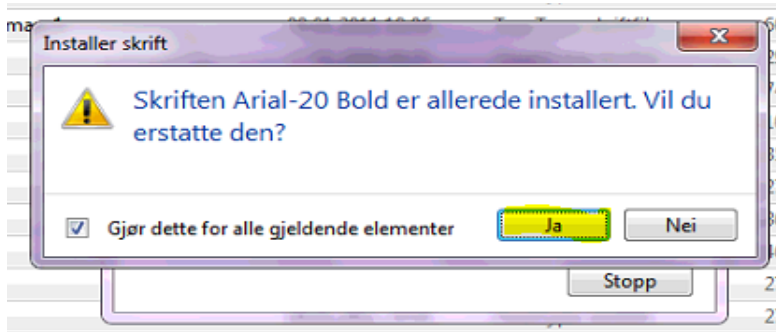
- After completion go to **C:\Temp\Install** :



- Open **Fonts** folder, Click **ctrl+A**, then **Right click** and click on **Installer**:



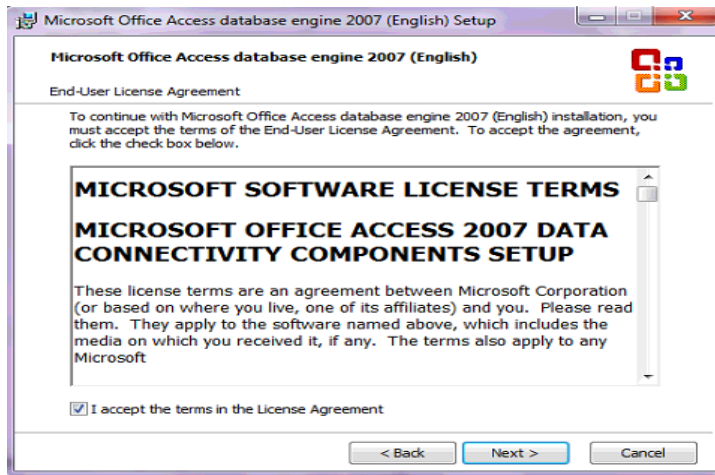
- Check the box and click on **Ja**:



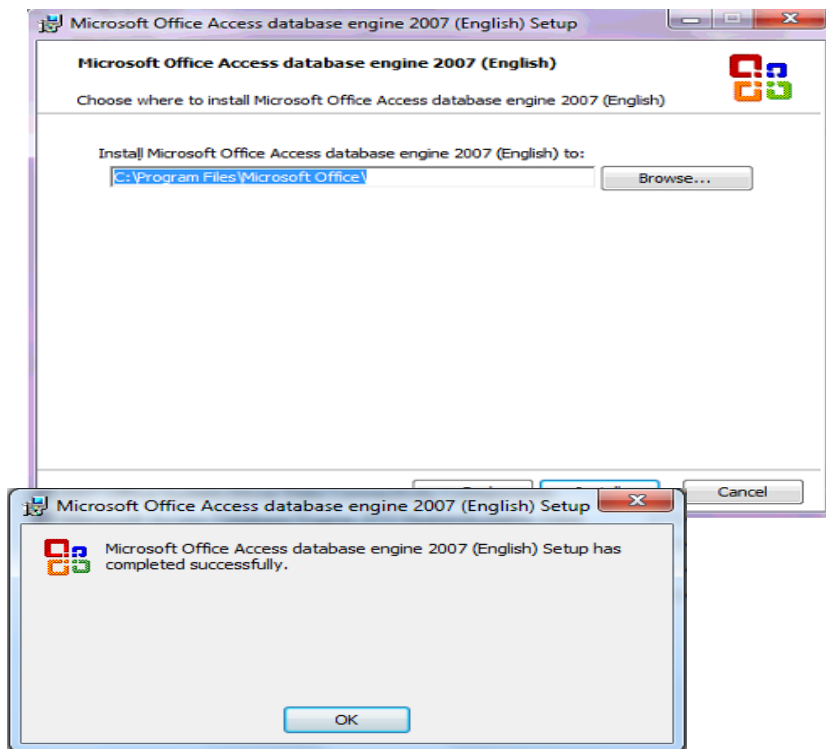
**Step 4:**

Run **2007 Office System Driver Data Connectivity Components** from **Install** folder:

- Check the box and click on **Next**:



- Now click on **Install**:

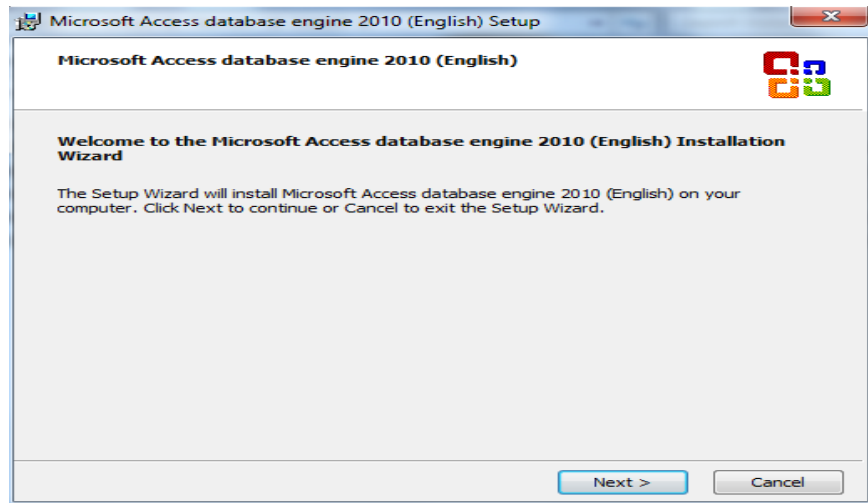


- Click on **Ok**.

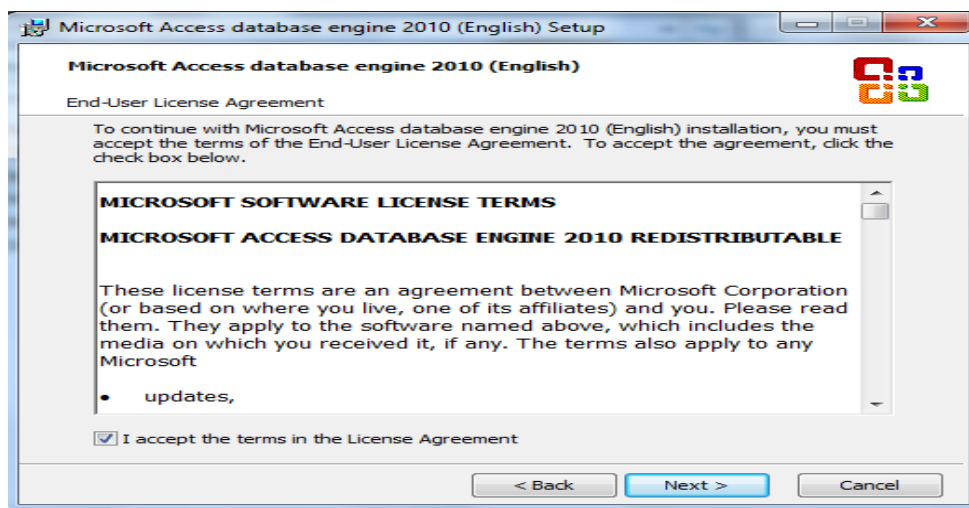
**Step5:**

Run **Microsoft Access Database Engine 2010 Redistributable-32bit** from **Install** folder:

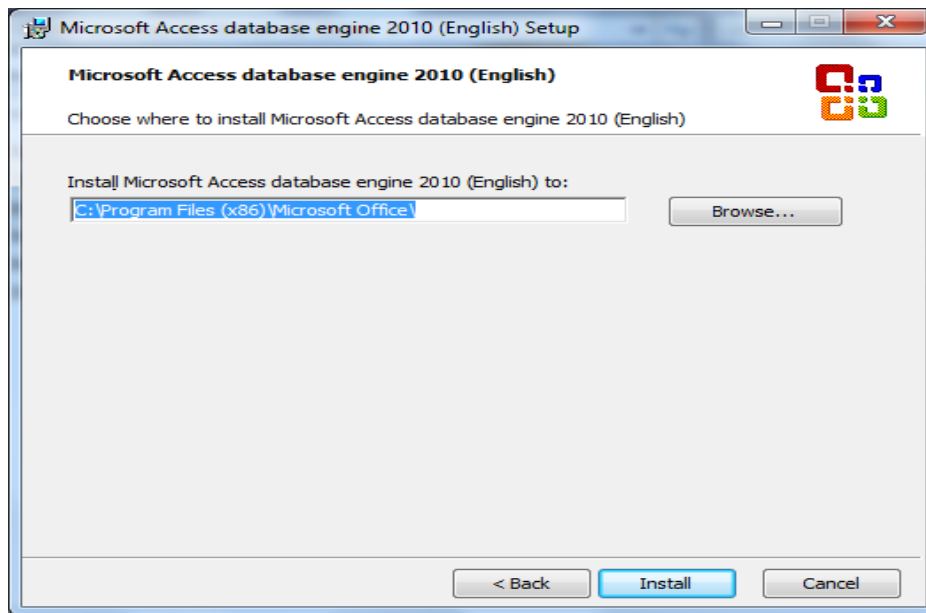
- Click on **Next:**



- Check the box and click n **Next:**

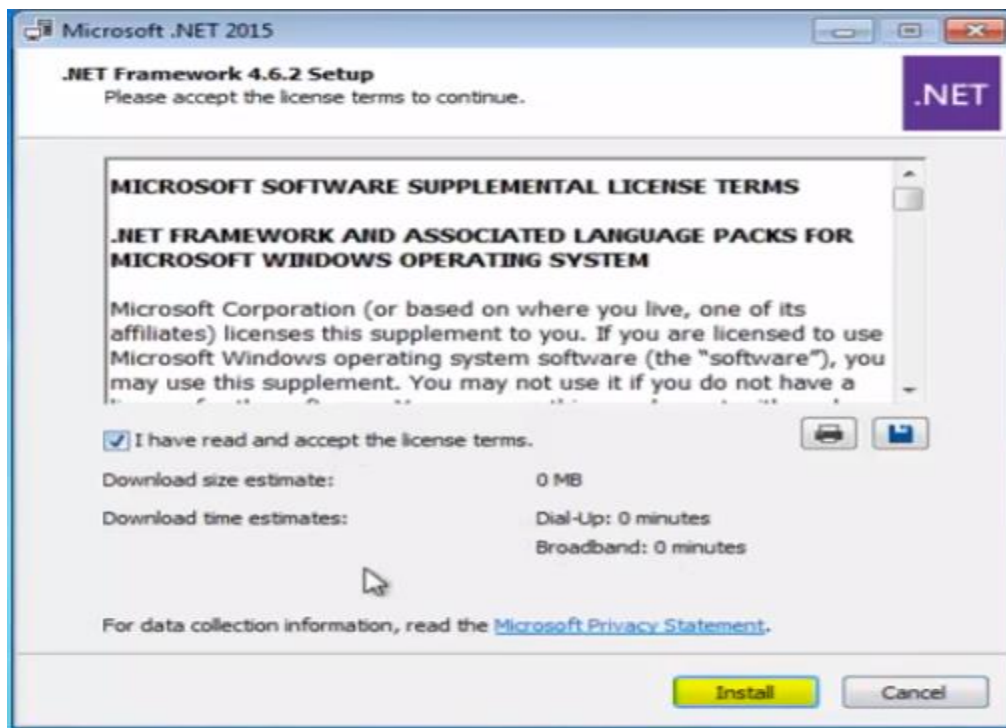


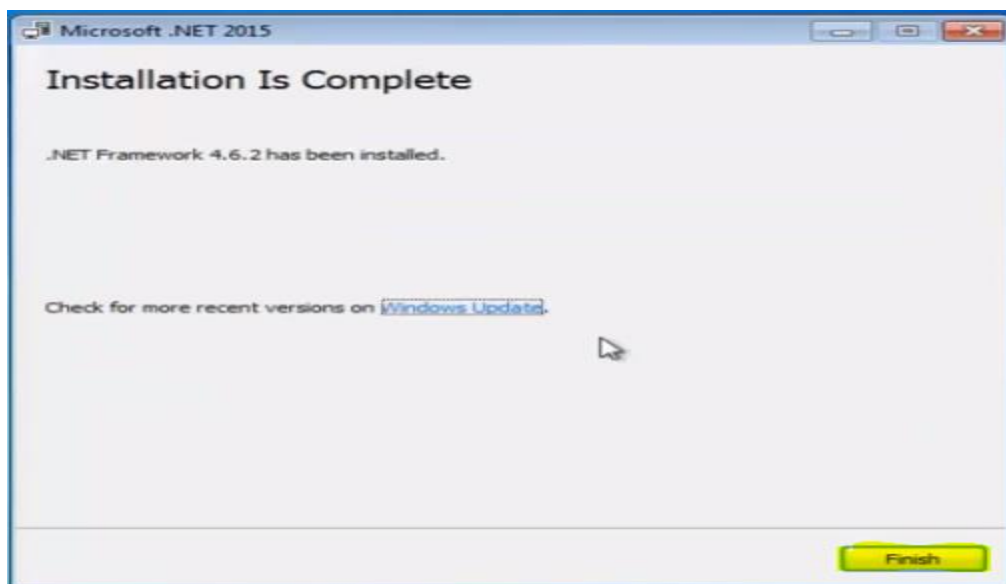
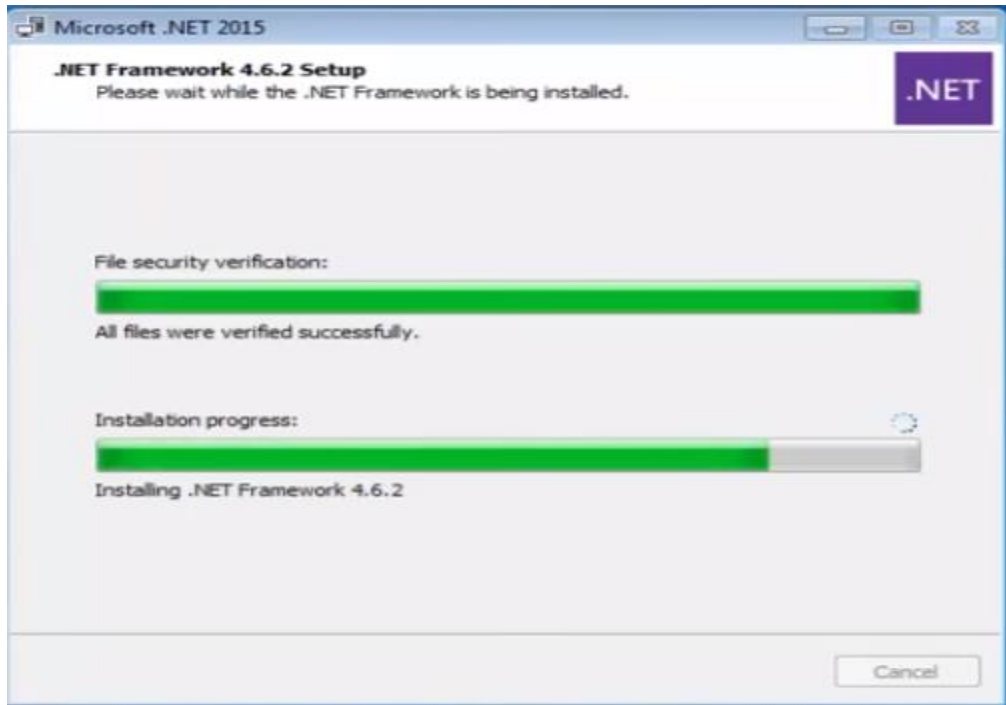
- Click on **Install**:



### Step 6:

Run **NDP452-KB2901907-x86-x64-AllOS-ENU** from **Install** folder:





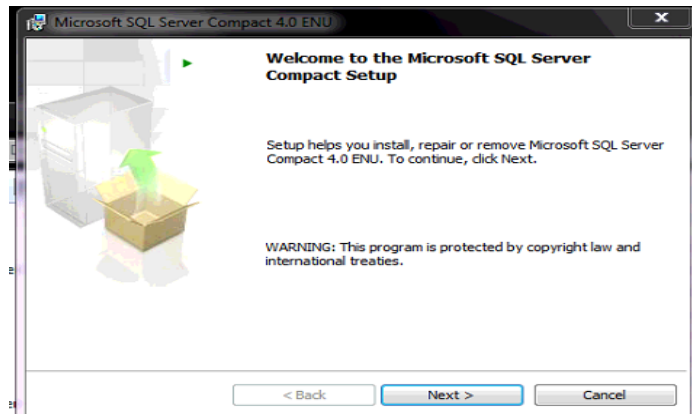
**Step 7:**

Run **NDP452-KB2901907-x86-x64-AllOS-NOR** from **Install** folder, install it similarly as **NDP452-KB2901907-x86-x64-AllOS-ENU** (Step 6:)

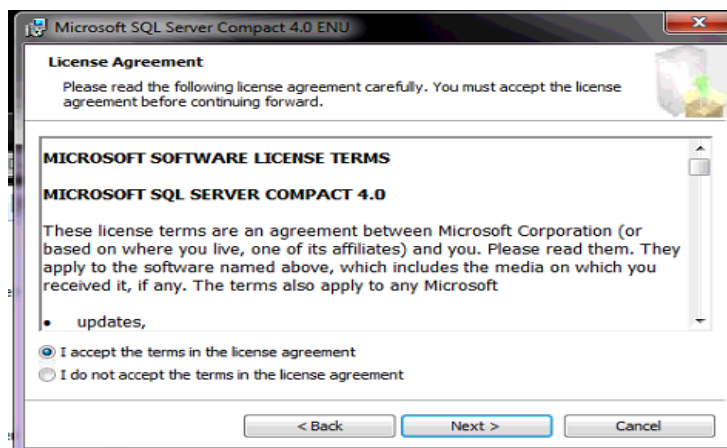
**Step 8:**

Run **SSCERuntime\_x86-ENU** or **SSCERuntime\_x64-ENU** from **Install** folder as per system configuration:

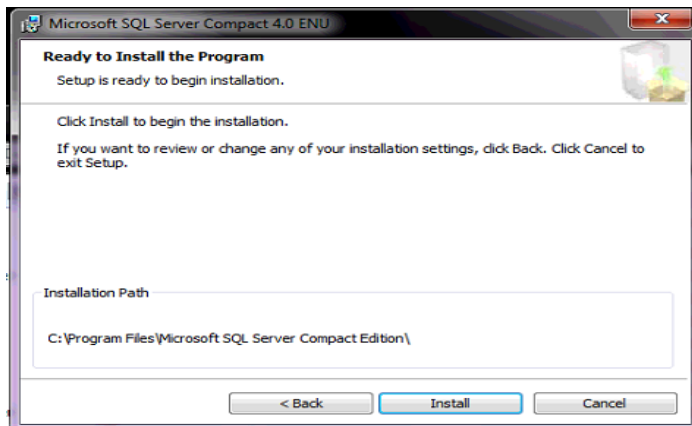
- Check the box and click on **Next**:



- Select **I accept the terms in the license agreement** and click on **Next**:

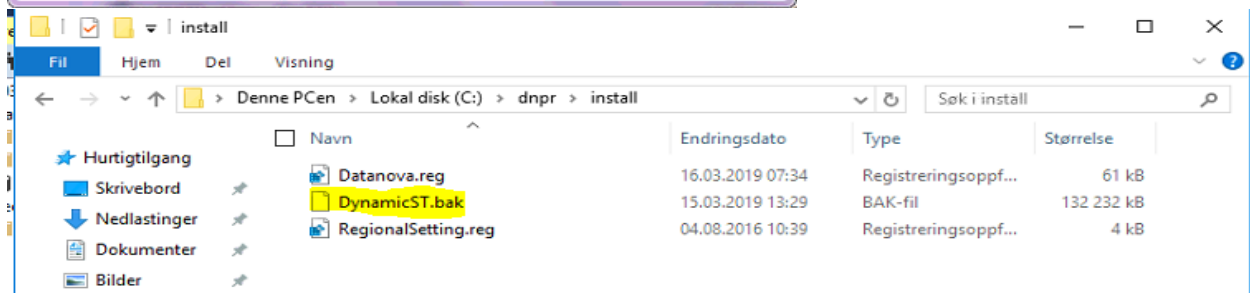
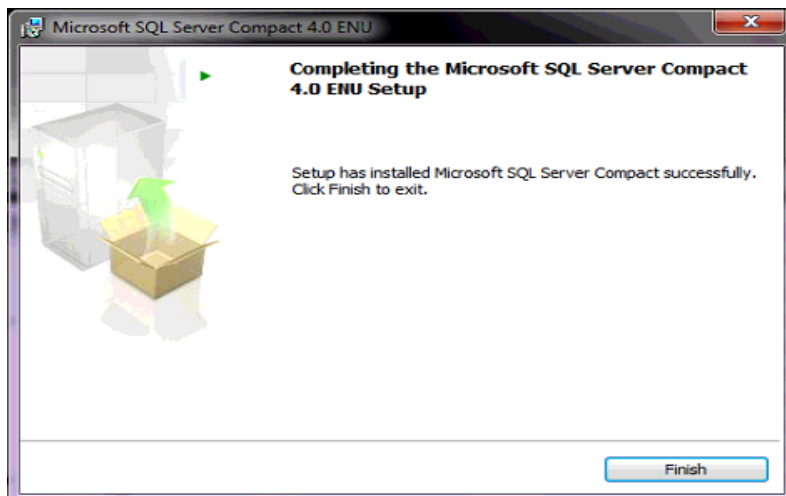


- Click on **Install**:

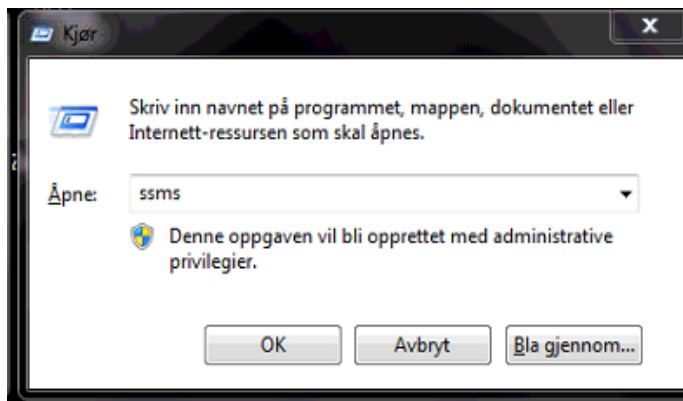


**Step 9:**

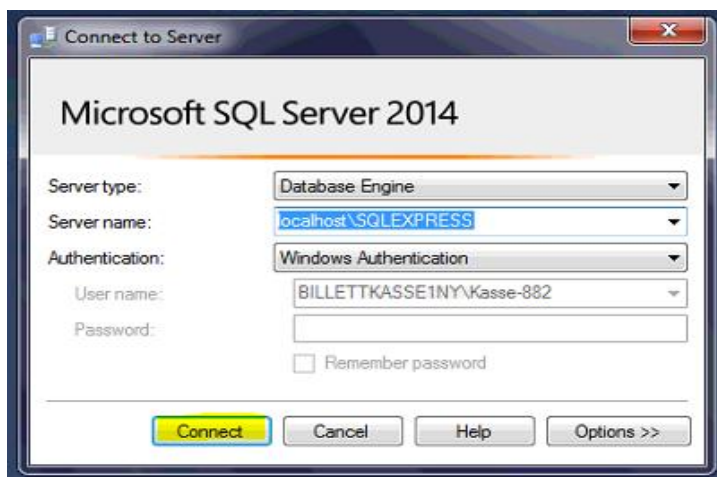
**Restore database and create erpbo user:**



- Open SQL Server:

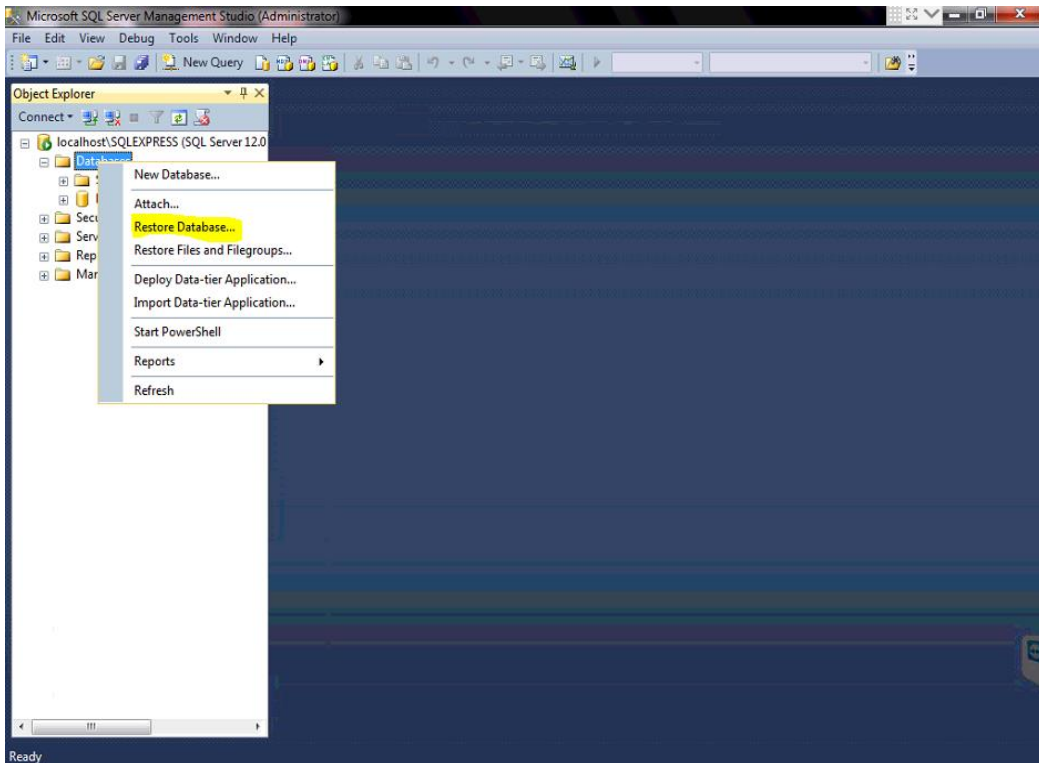


- Enter Server Name **localhost\SQLEXPRESS** and click on **connect:**

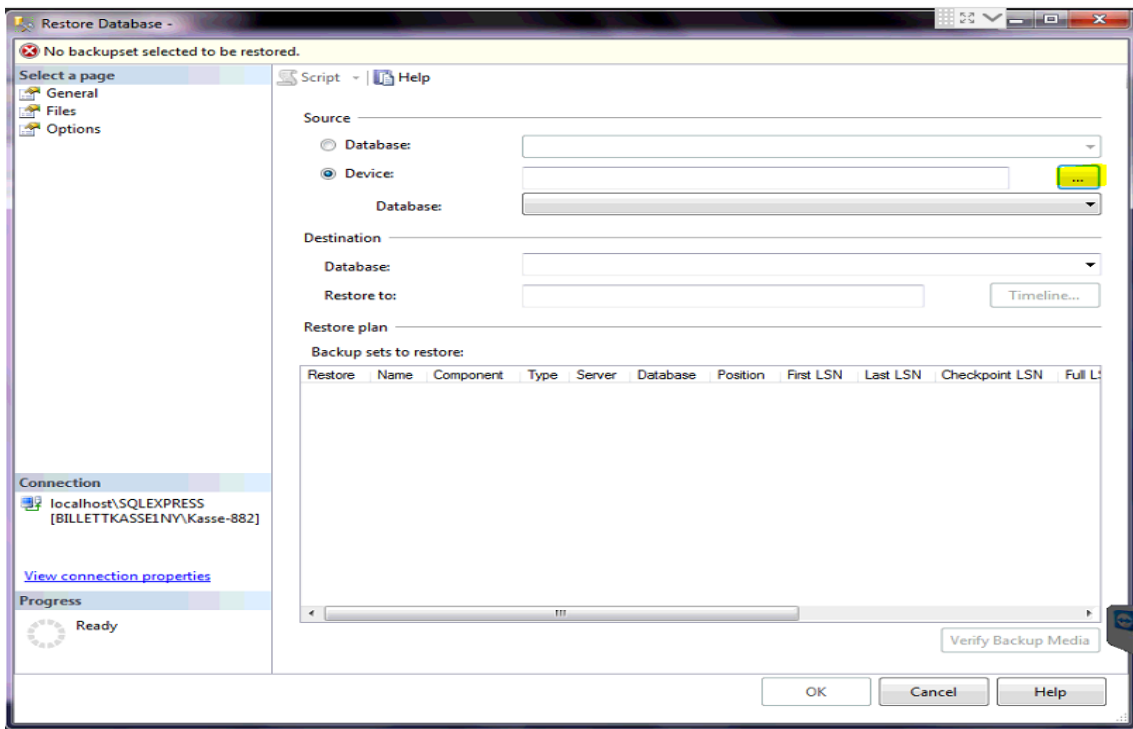


*If you are not able to restore database, then you login with SA userid and password.*

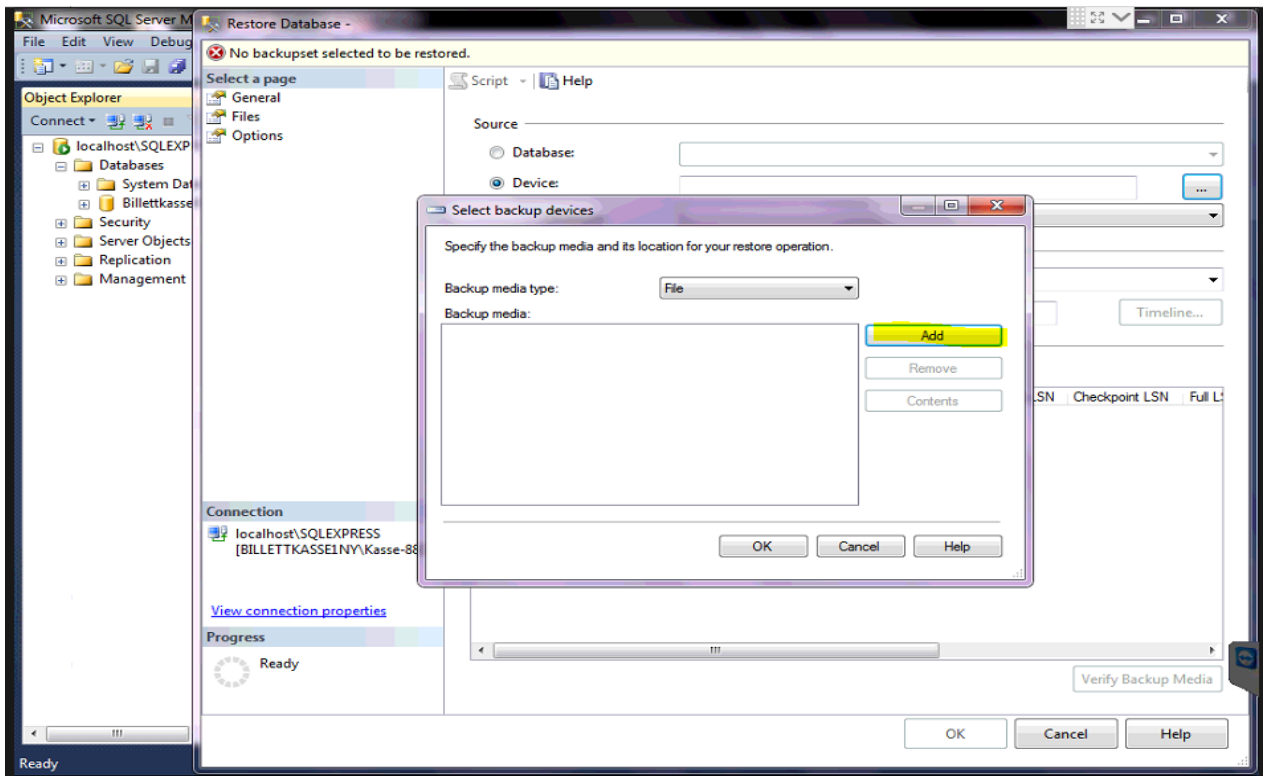
- Right click on **Database** and Click on **Restore Database**:



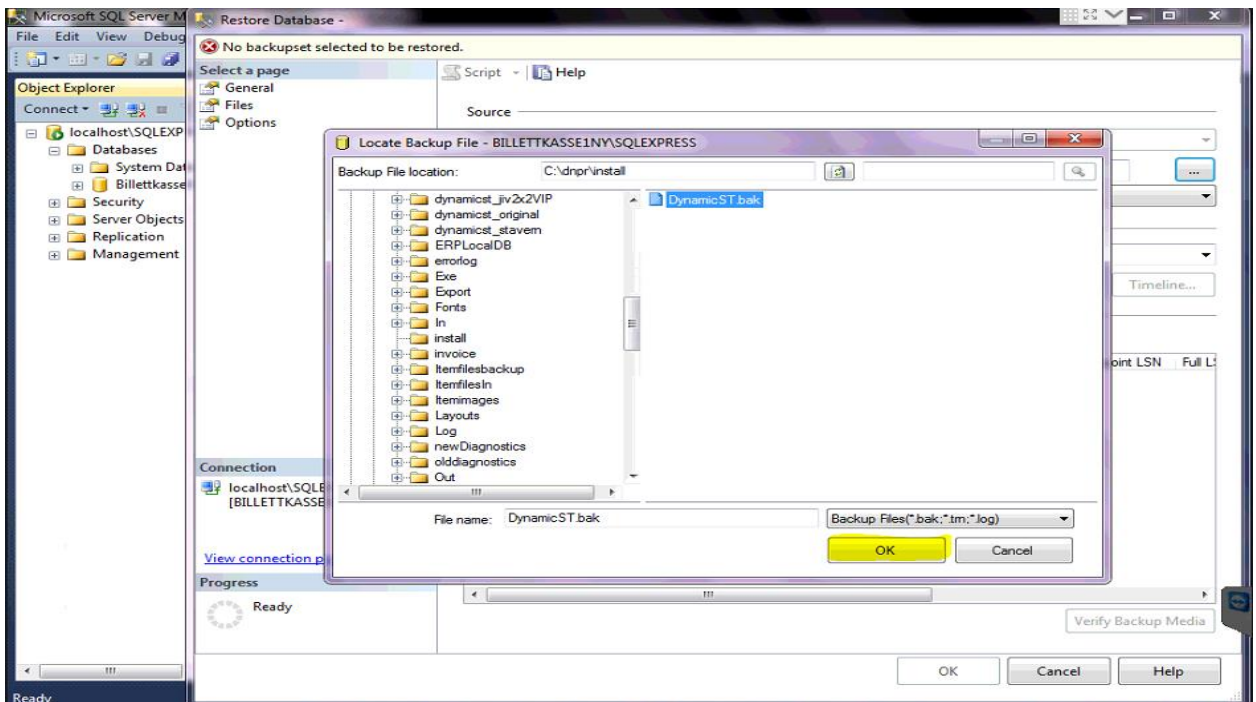
- Check the **Device** Box and Click on ...

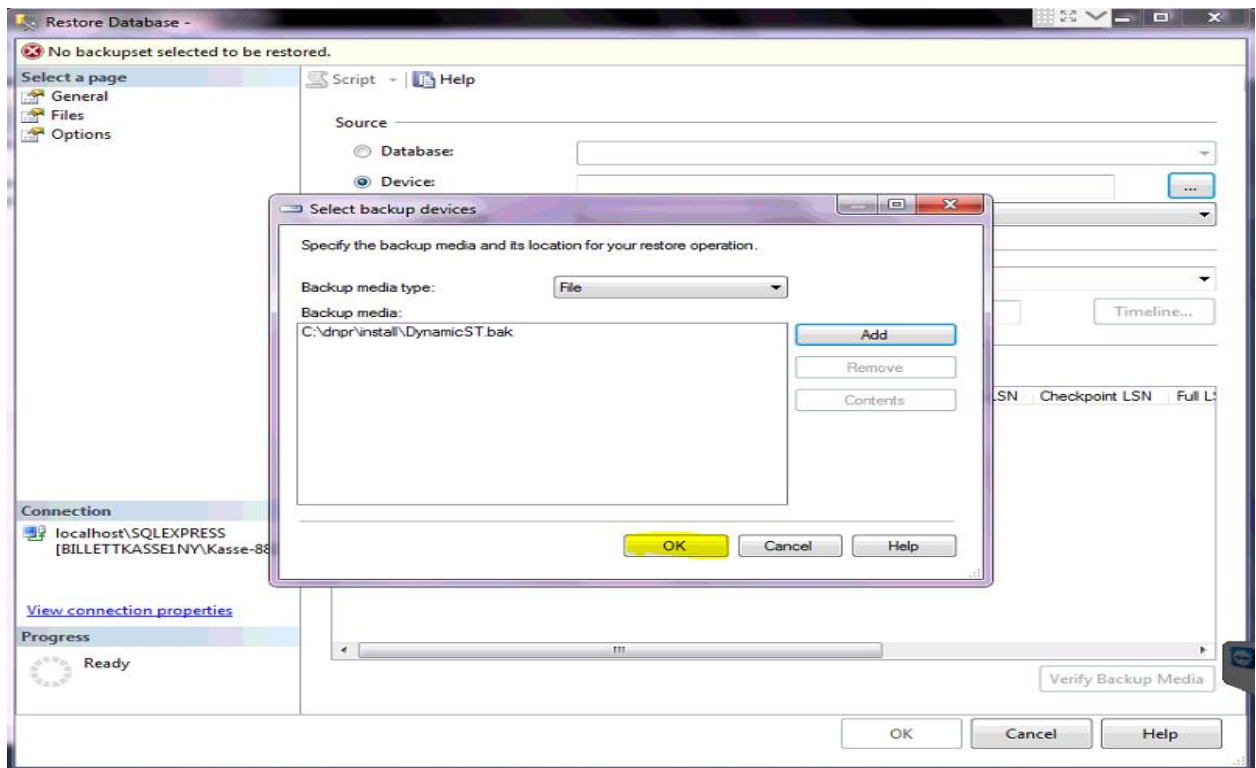


- Click on **Add**:

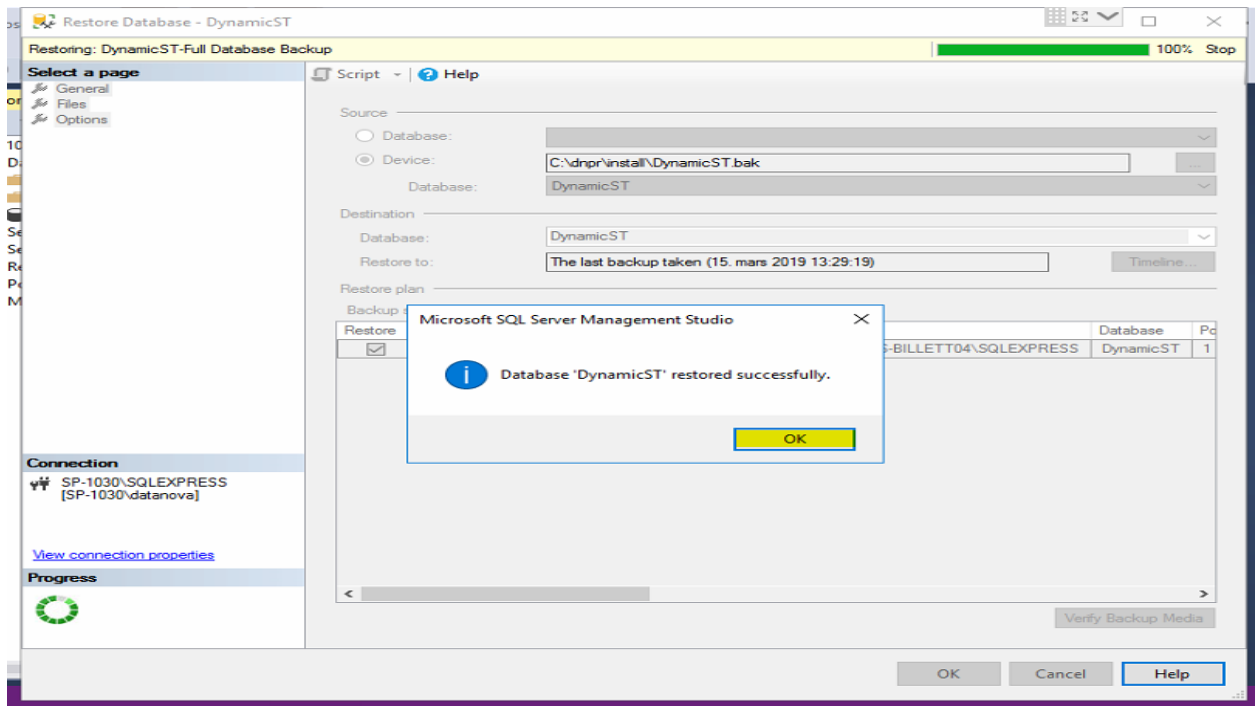
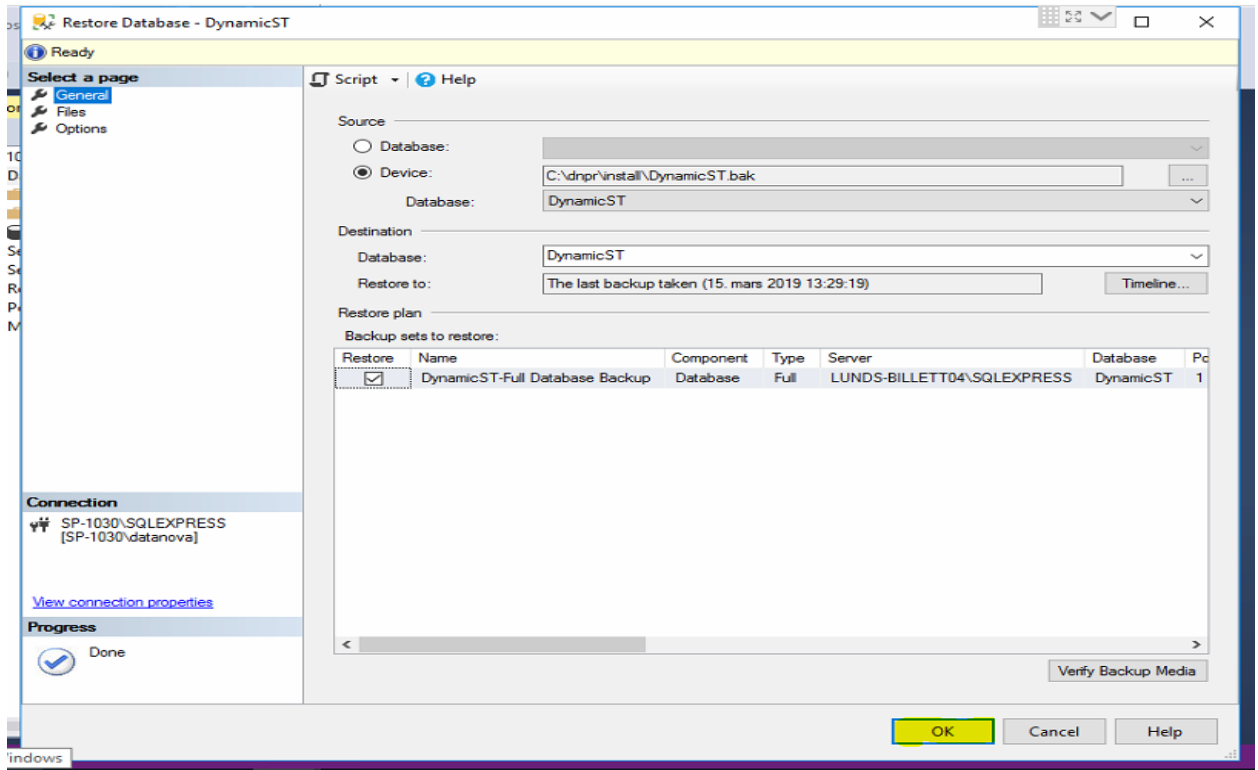


- Select the **DynamicST.bak** from **C:\dnpr\install** and click **Ok**:

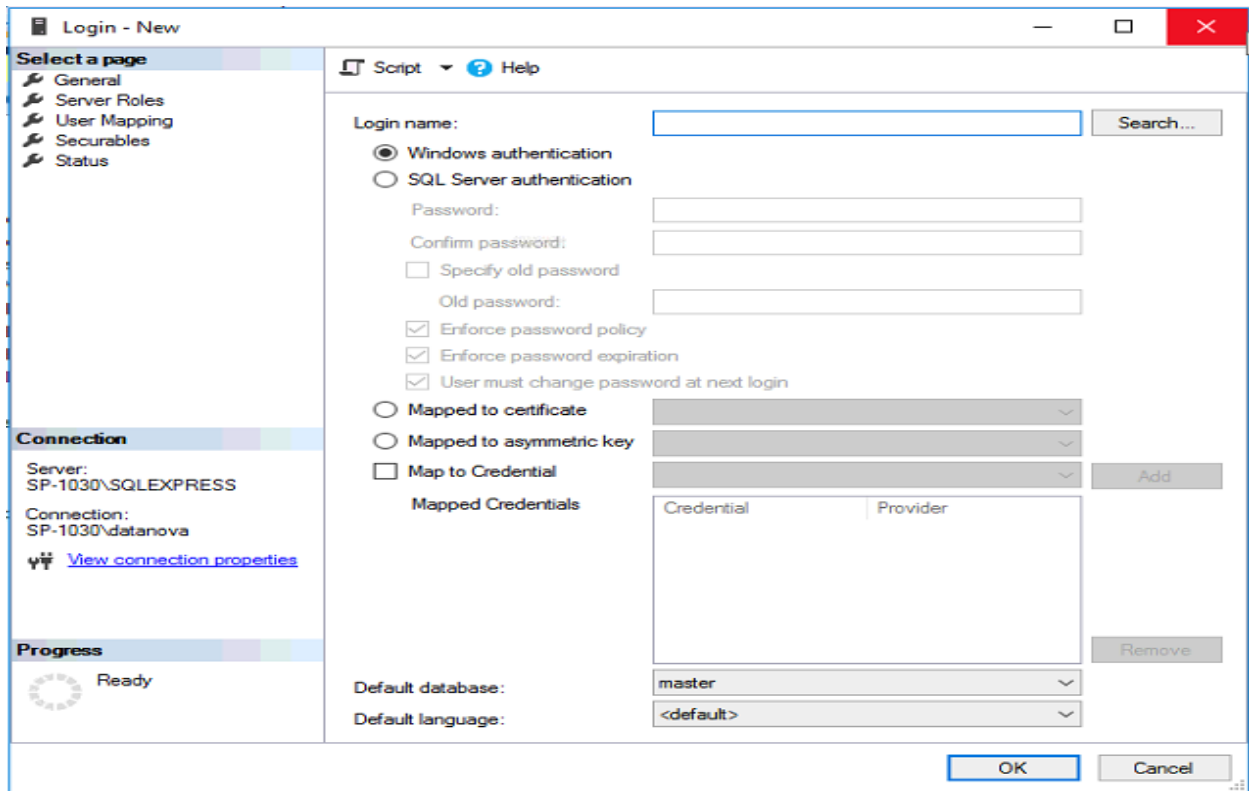
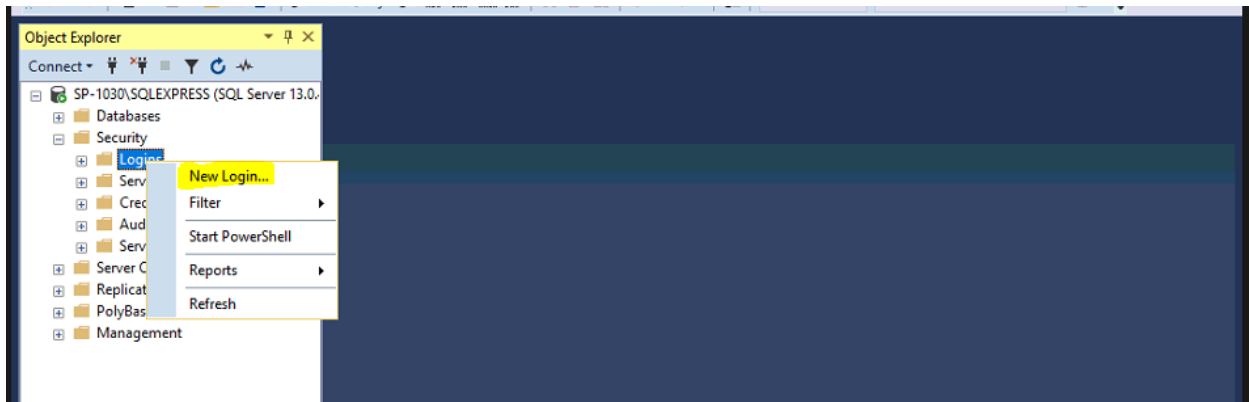




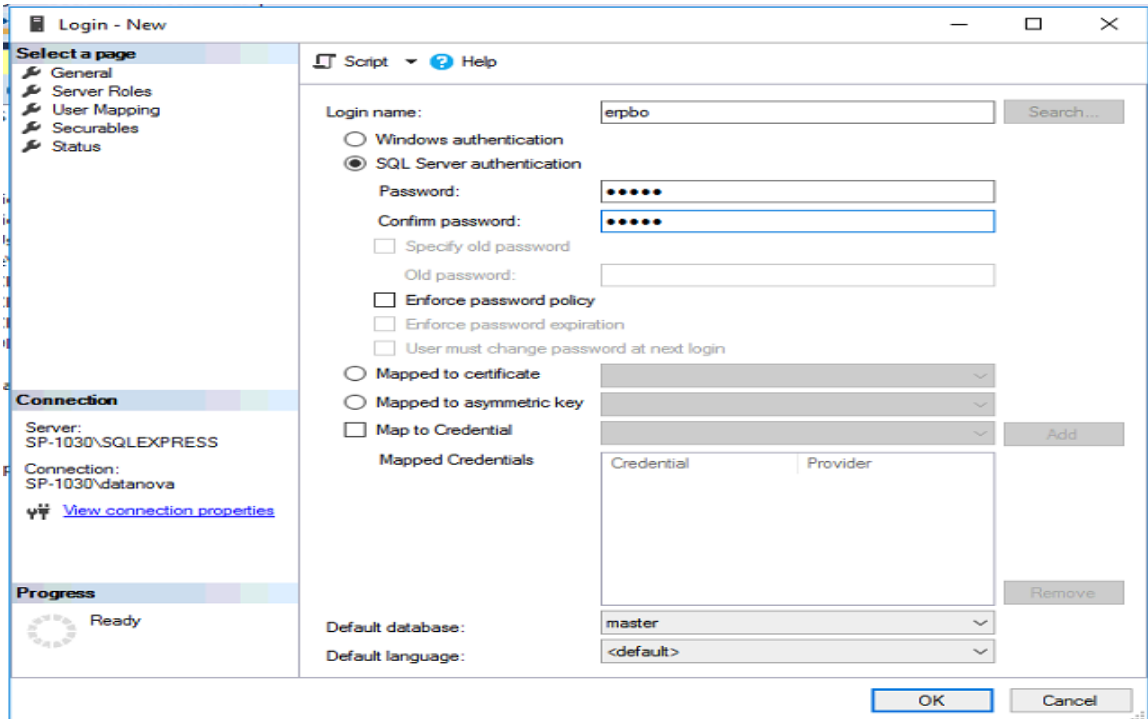
- Click **Ok** and then wait for completion :



- Go to **Security**, right click on **Login** and click on **New Login**:



- Check **SQL Server authentication**, enter login name **erpbo** and in password and confirm password enter **erpbo** and then uncheck **Enforce password policy**:

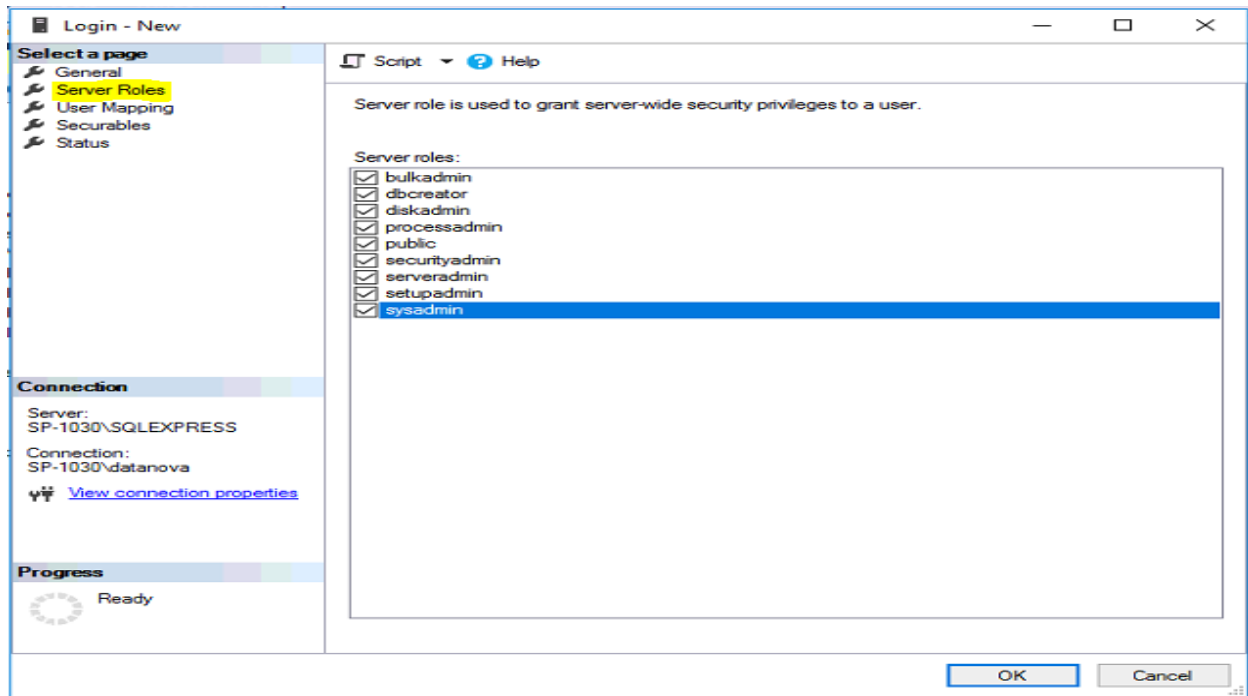


The screenshot shows the 'Login - New' dialog box with the following configuration:

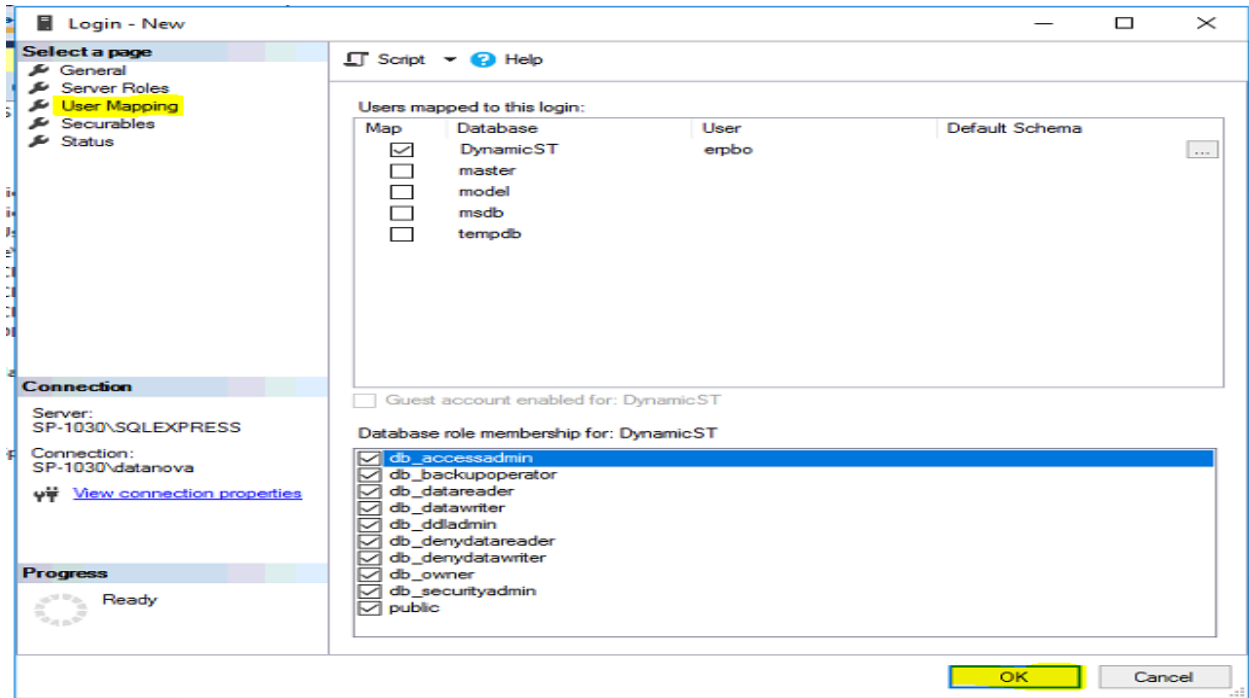
- Login name:** erpbo
- Authentication:** SQL Server authentication (selected)
- Password:** erpbo
- Confirm password:** erpbo
- Enforce password policy:** unchecked
- Default database:** master
- Default language:** <default>

The 'Progress' indicator shows 'Ready'.

- Now go to **Server Roles** and check all server roles:



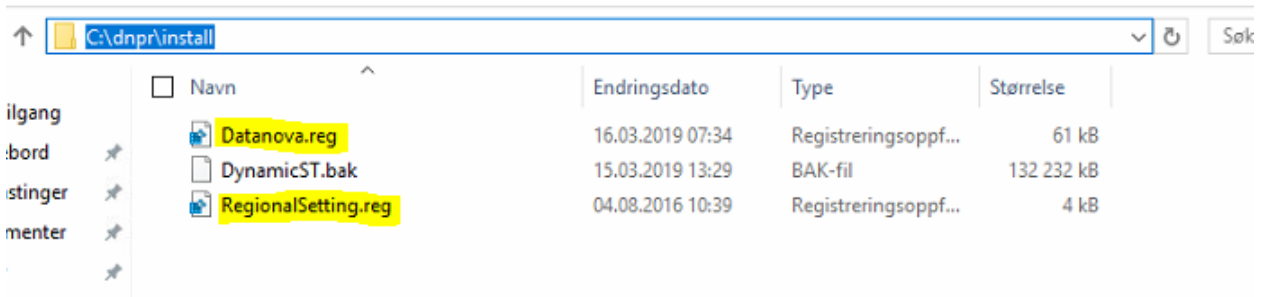
- Now go to **User Mapping** and check **DynamicST** in **Users mapped to this login** and then check all **Database role membership for: DynamicST**, at last click on **OK**:



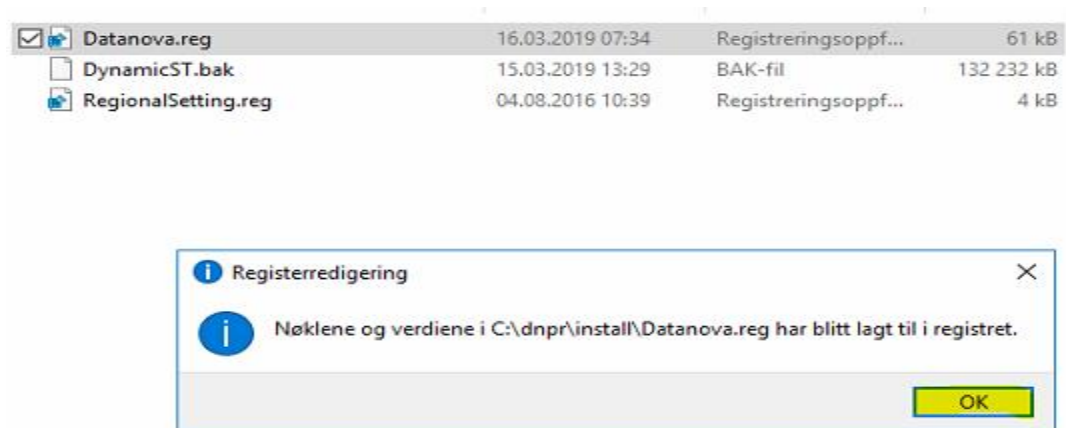
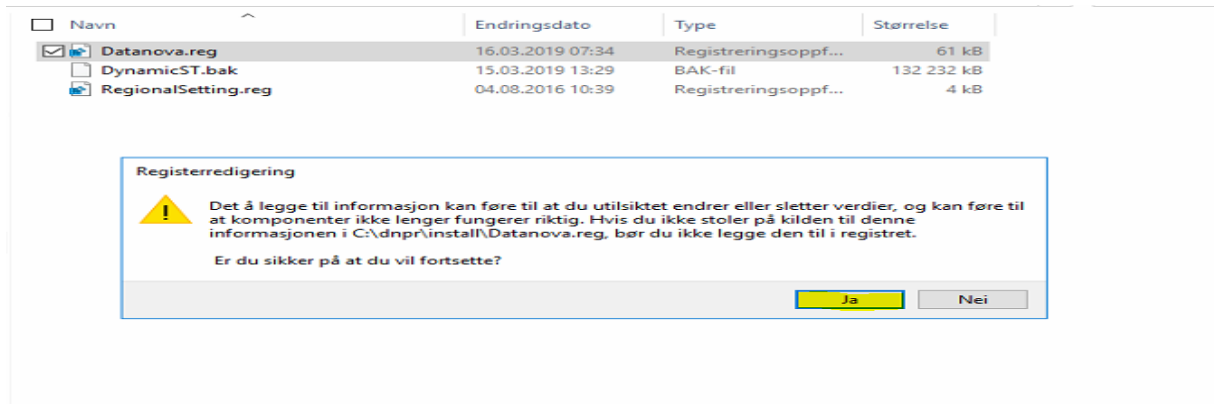
**Step 10:**

Install Registry from C:\dnpr\install:

- **Datanova.reg** and **RegionalSetting.reg** similarly.

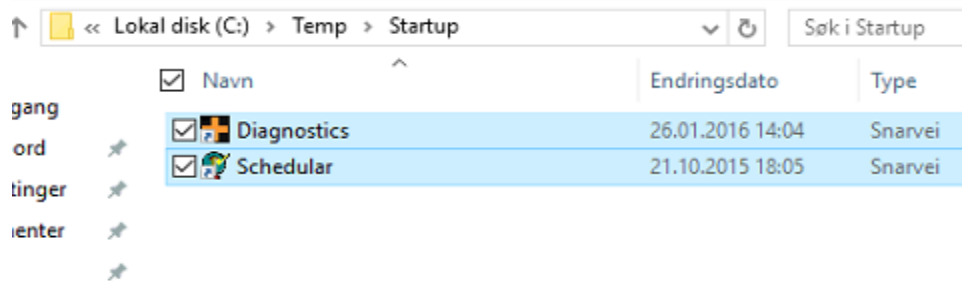


- Click on **Datanova.reg** and then click on **Ja** and then **Ok**:

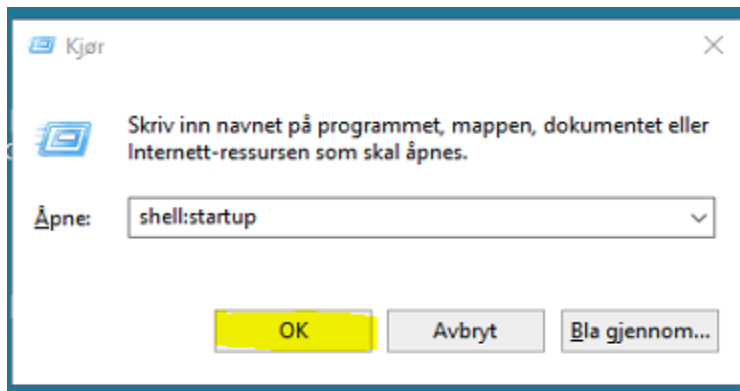


### **Step 11:**

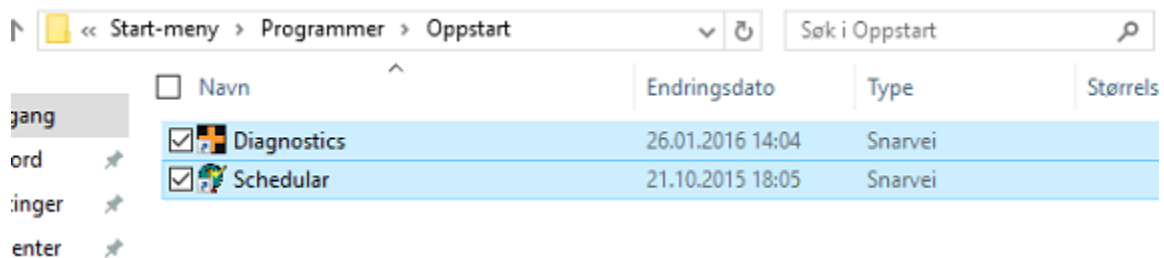
- Go to **C:\Temp\Startup** copy both the files:



- Click **ctrl+R**, then type **shell:startup** and click **OK**:

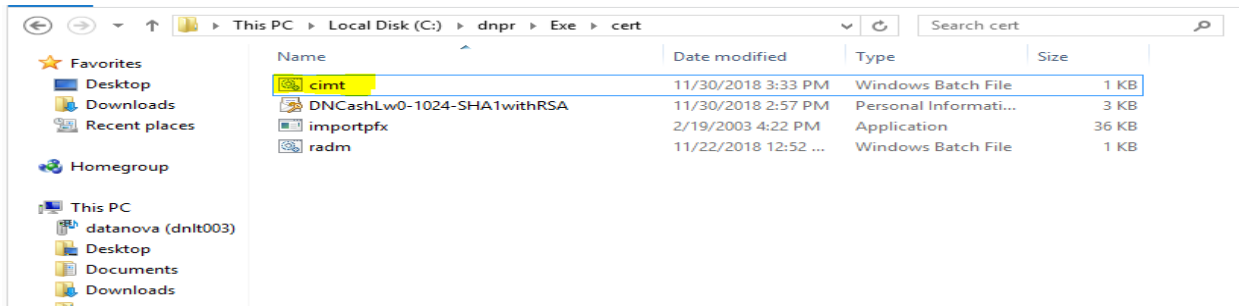


- Delete all files from **shell:startup** if any present and paste the file which copied from **C:\Temp\Startup** :

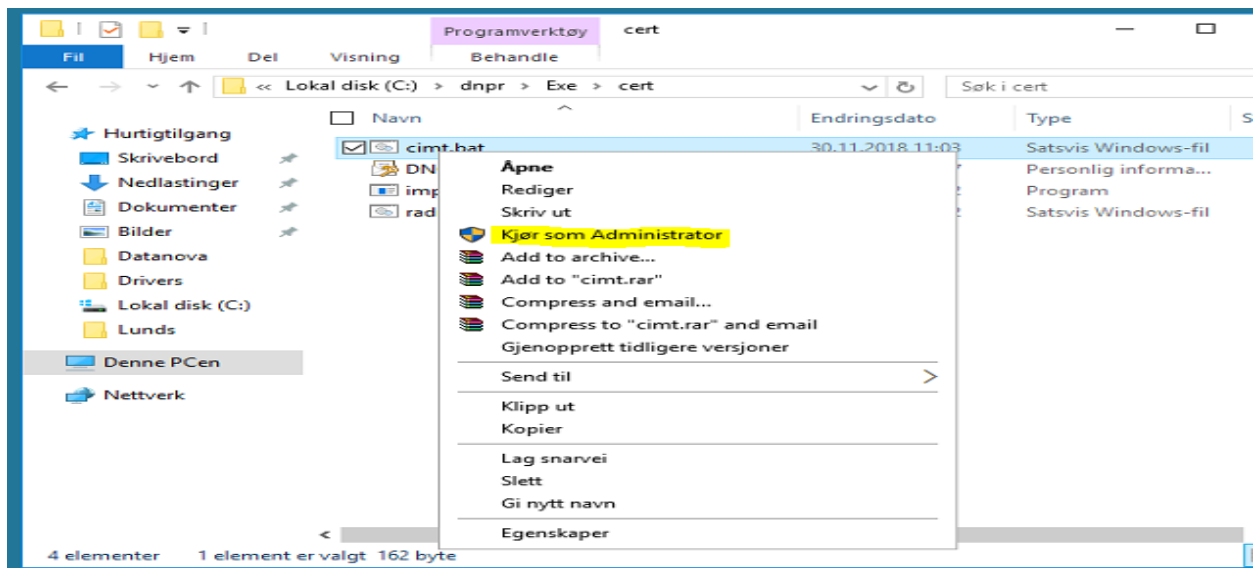


**Step 12:**

- Go to **C:\dnpr\Exe\cert** right click on **cimt**:



- Run it as administrator:



- Wait until folder goes empty:

